



BIGEE National Business Pre- Incubation Programme & SBDC Strengthening

Invitation For Proposals

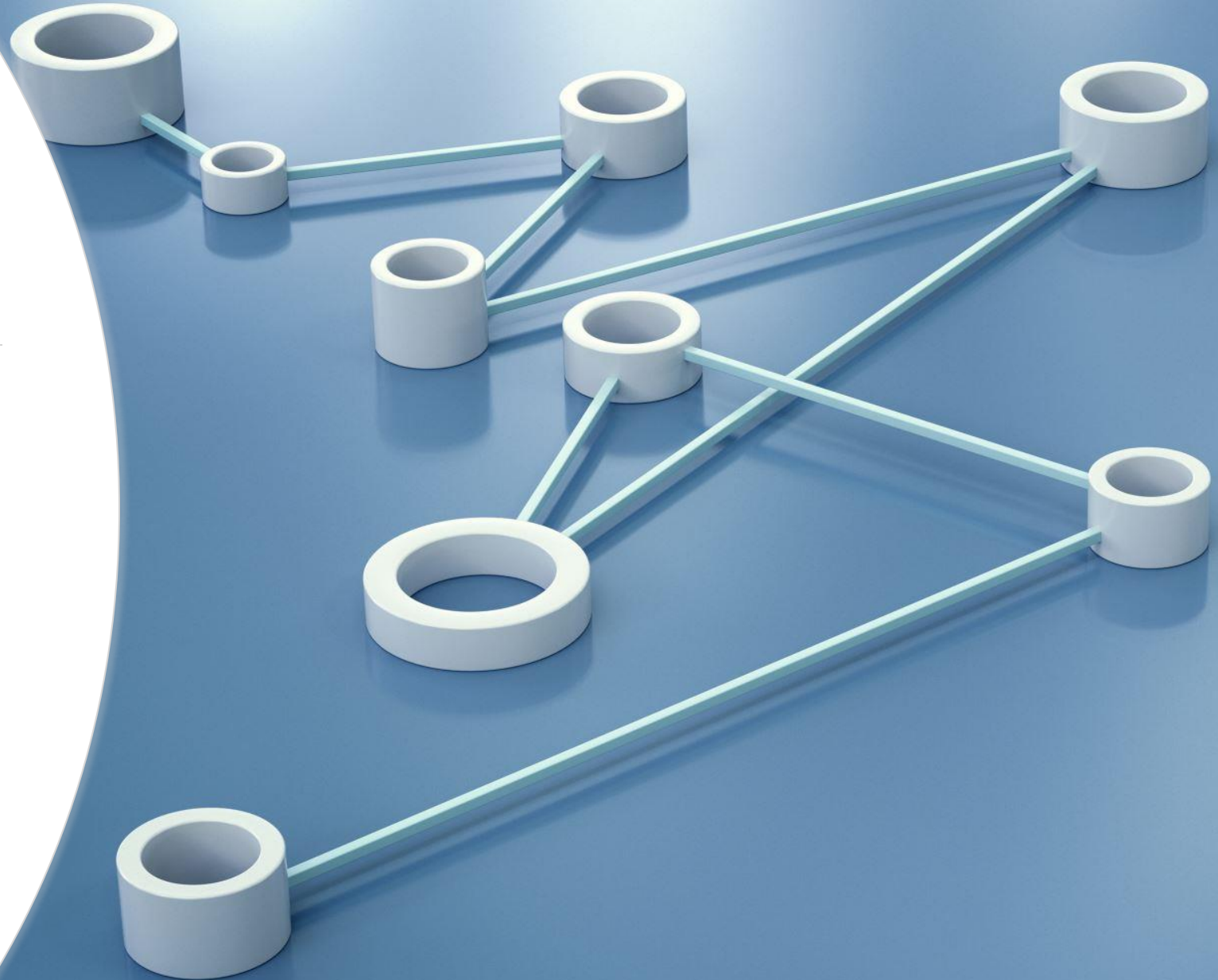


GRANTS



Contents

- **Strengthening Programme Overview**
- **Application & Evaluation**
- **Monitoring & Evaluation**



Overview of Strengthening Programme



Overview

The Boosting Innovation for Growth in Entrepreneurial Ecosystems (BIGEE) Programme of the Development Bank of Jamaica (DBJ) is inviting qualified Organizations to submit a proposal for the implementation of a **National Business Pre-Incubator Network Strengthening Programme** in Jamaica.



Programme Goals

1. To increase economic growth and improve investment deal flow by **identifying and supporting entrepreneurs, especially those with high-growth potential, scalable innovations**, from the stage of business idea-refinement
2. To strengthen the delivery of pre-incubation services to entrepreneurs in Jamaica by **improving the range and capacity of the business-formation support network** available to current and potential entrepreneurs



Funding

The DBJ will provide non-reimbursable matching grant funding of **up to US\$300,000** to strengthen the delivery of pre-incubation services to entrepreneurs in Jamaica

Counterpart funding of **30% in cash** is required.



Composition of Budget

Project Component	Percentage of Funds
Staff Remuneration	50%
Procurement & Facility Upgrades	30%
Training & Certification	20%
TOTAL	100%

Budget must adequately support activities that will justifiably address gaps.

All budget components including capital expenditures and upgrades must have a direct impact on service delivery.

Required Strengthening Framework



Capacity Development of
Personnel



Acquisition of technical &
physical Infrastructure



Procurement of computer
hardware & software

The Process

Overview of Allowable Capacity Building Activities

Training & Capacity Building	Hiring of Staff and Professional Service Providers	Procurement of Equipment, Furniture, Hardware & Software
<ul style="list-style-type: none"> ▪ Training in Management of Pre-Incubation Programmes ▪ Certifications related to the management of Pre-Incubation Programmes. ▪ Certifications in delivering training and services related to Pre-Incubation Programmes. 	<ul style="list-style-type: none"> ▪ Hiring of Centre Managers to provide Pre-Incubation services in underserved parishes/regions ▪ Hiring of Additional Business Counsellors to support Pre-Incubation ▪ Hiring of Trainers in the following fields: <ul style="list-style-type: none"> ▪ Business Model Development ▪ Marketing ▪ Customer Acquisition ▪ Financial Costing & Projections 	<ul style="list-style-type: none"> ▪ Software licenses related to the training and management of Pre-Incubation Programmes and Clients ▪ Training Room Equipment and furniture ▪ Office Furniture and Equipment



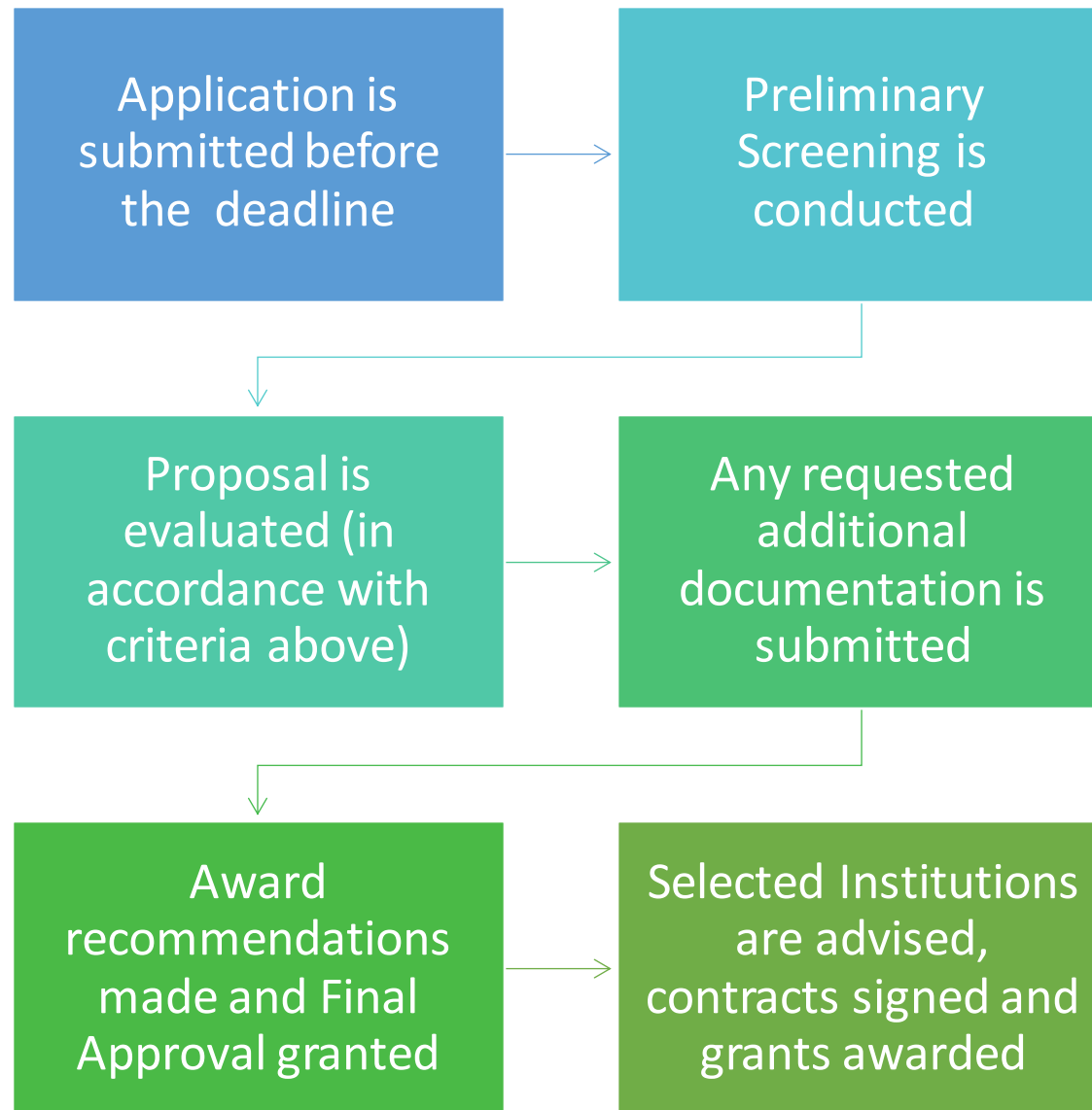
The Application & Evaluation Processes



Evaluation Framework

Evaluation Criteria	Weight
Proposed Improvement to Operational Model	20%
Network Gap & Need Assessment	20%
Proposed Capacity Development Programme	40%
Past performance of Centres	10%
Monitoring, evaluation and follow-up	10%
TOTAL SCORE	100%

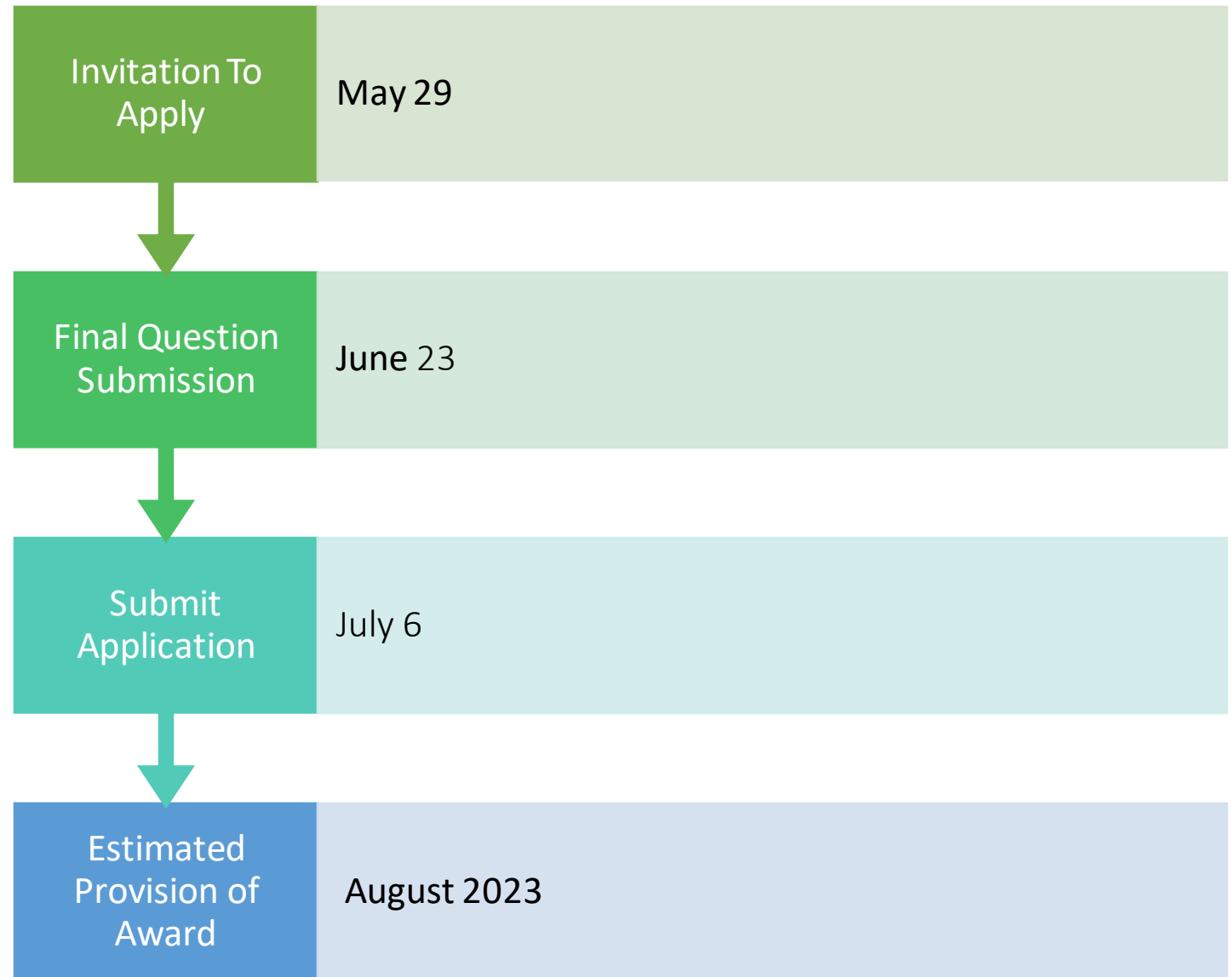
Application & Evaluation Process



Application & Evaluation Process



Important Dates





Q&A

